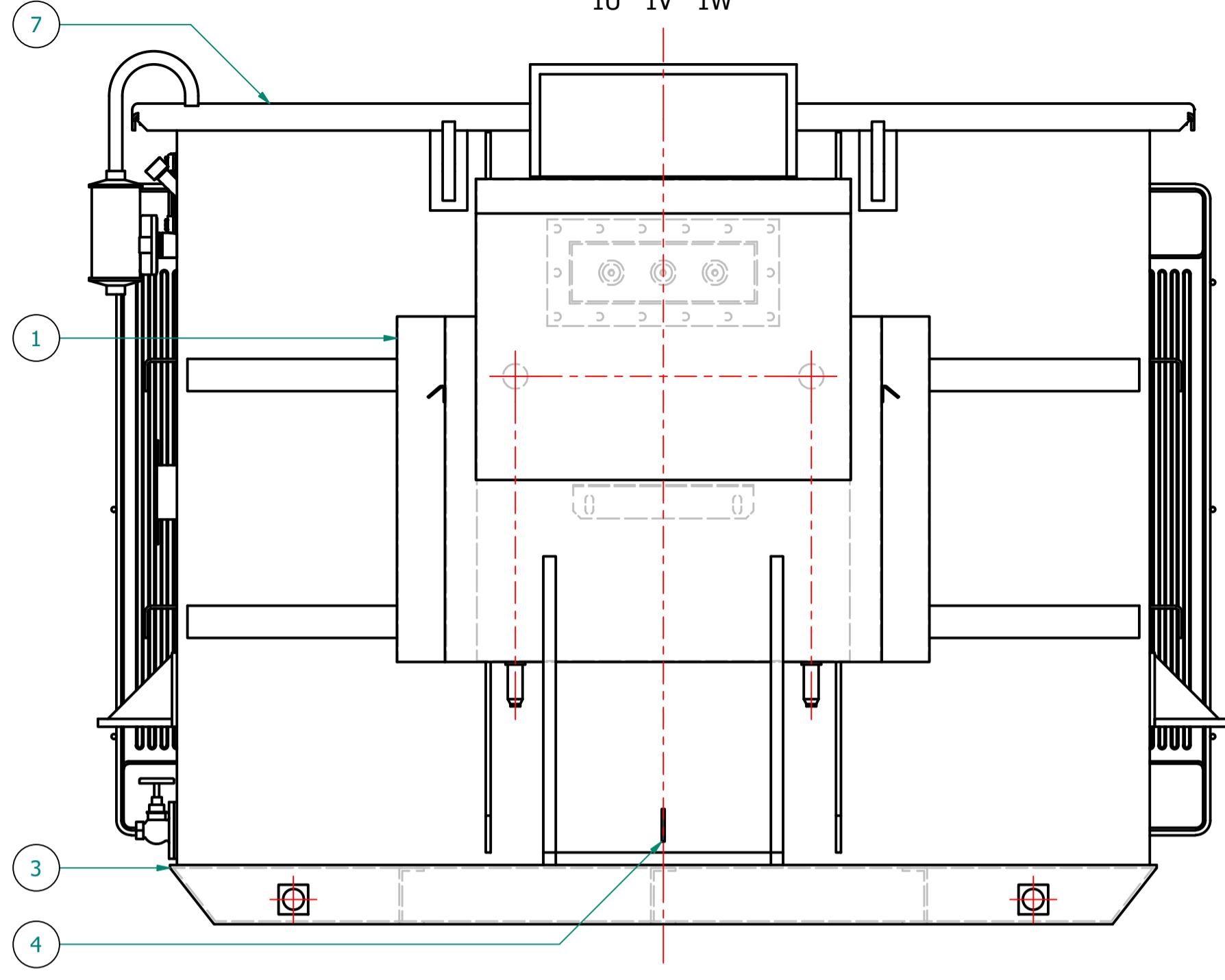
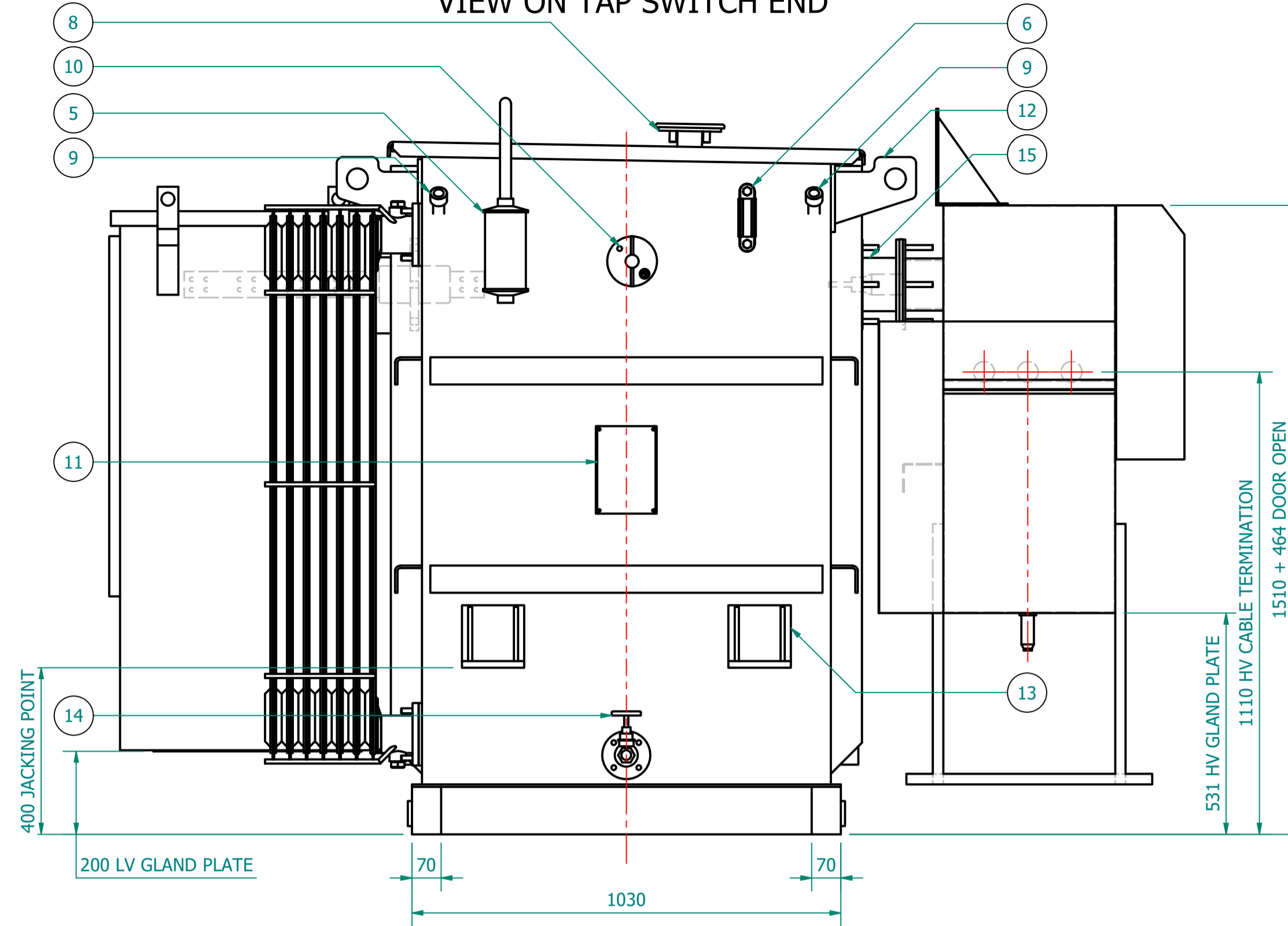


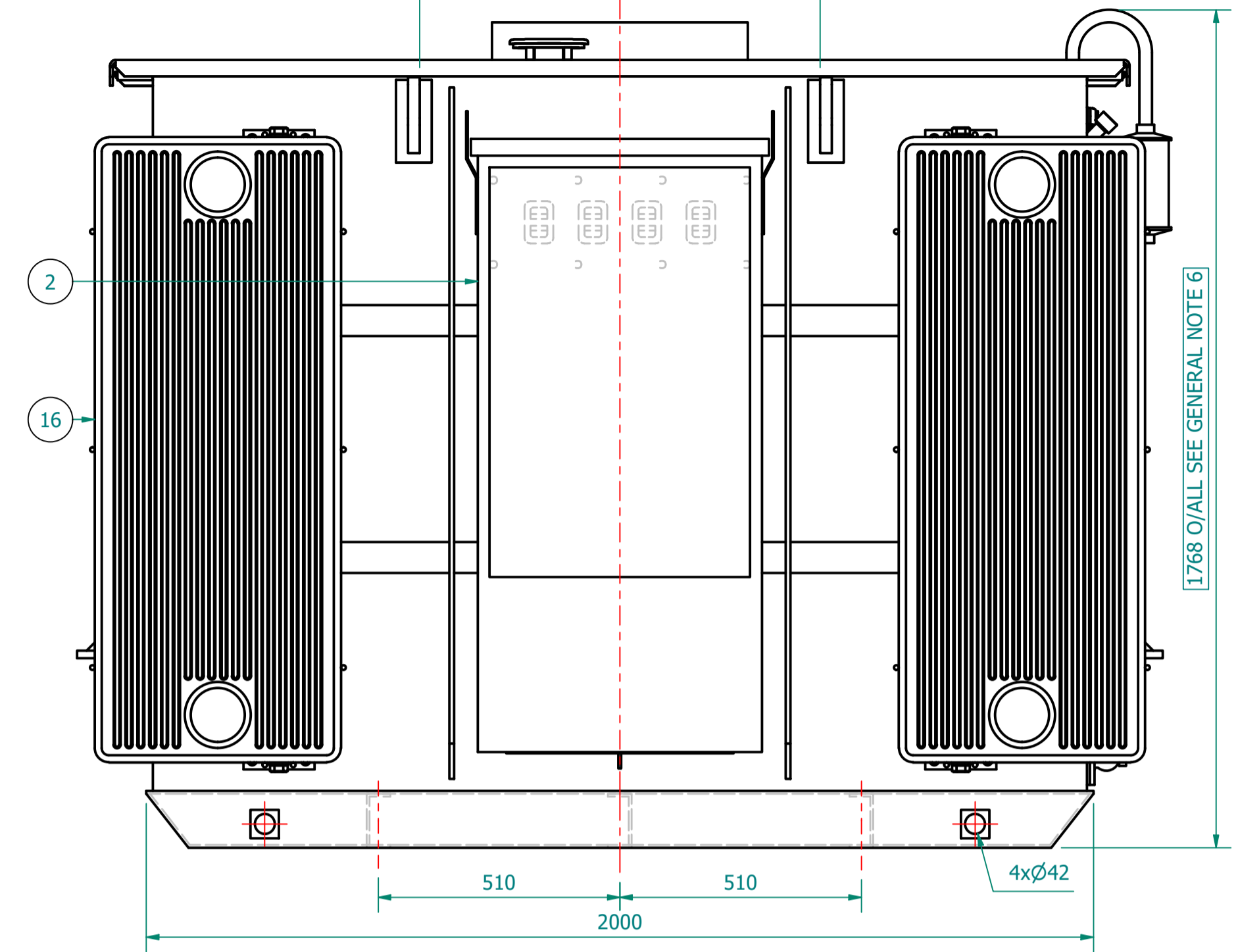
VIEW ON HV SIDE  
PHASE ROTATION  
1U 1V 1W



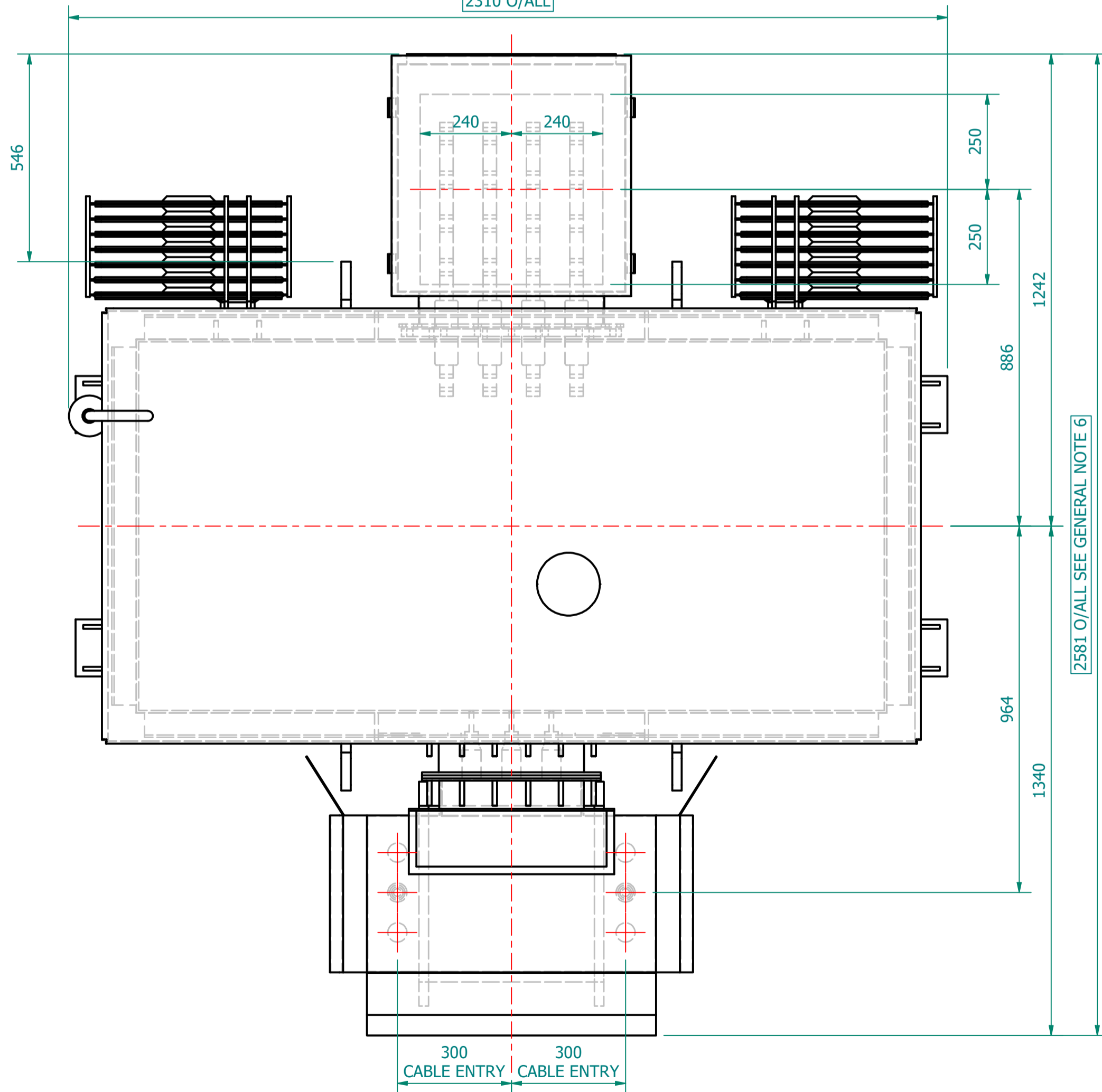
VIEW ON TAP SWITCH END



VIEW ON LV SIDE  
PHASE ROTATION  
2W 2V 2U 2N  
845 TYP. TO 2 PLACES



PLAN VIEW  
2310 O/ALL



GENERIC LV CABINET SHOWN.  
SIZES MAY CHANGE.  
FINAL DESIGN MAY REQUIRE SEPARATION  
FROM THE TX FOR TRANSPORTATION.



TRANSFORMER WEIGHT & VOLUME		
CORE AND WINDING	kg	4700
TANK AND FITTING	kg	1350
COOLING LIQUID VOLUME	L	1658
COOLING LIQUID WEIGHT	kg	1350
TOTAL TX WEIGHT	kg	7400
ADDITIONS TO THE TRANSFORMER WEIGHT		
RN2d RMU	Kg	385
LV CABINET	kg	----

2000kVA		ELECTRICAL RATINGS			
No Load Voltage Ratio at Normal Tap	HV Tappings	Vector Group	Frequency	Full-Load Current at Normal Tap	
11000 / 415V	+7.5 to -5.0% IN 2.5% INCREMENTS	Dyn11	50Hz	HV Side	LV Side
Design Impedance at Normal Tap	No Load Losses at rated Voltage & Frequency	Full Load Losses at rated Current & at 75°C Temp.	Temp. Rise above Ambient 40°C		
6.00%	815W	11475W	in Oil by Therm.	in Wdg. by Res.	
			60°C	65°C	
GENERAL NOTES					
1 ALL DIMENSIONS ARE IN 'mm'.					
2 ALL DIMENSIONS/WEIGHTS ARE SUBJECT TO ± 10% TOLERANCE.					
3 ELECTRONIC SCALE - 1:1 (ONLY WRITTEN DIMENSIONS TO BE FOLLOWED).					
4 TOLERANCE ON IMPEDANCE PER IEC:60076.					
5 PAINT SHADE.: 632 As PER BS:381C (SEMI GLOSS) TO ISO12944 - MIN C4H SPEC.					
6 O/ALL DIMS ARE SUBJECT TO EQUIPMENT DOOR OPENING DISTANCES.					
7					
8					
9					

ESSENTIAL LABELS

- ITEM 10 TAP CHANGER WARNING LABEL
- ITEM 6 C.O.L. 15°C COLD COOLANT LEVEL
- ITEM 2 LV WARNING LABEL
- ITEM 1 HV WARNING LABEL

ITEM	QTY	DESCRIPTION
16	2	DETACHABLE RADIATORS with AIR-RELEASE & DRAIN PLUG (520W x 1200C x 75 x 40P)
15	1	HV THROAT
14	1	DRAIN VALVE (25NB) with MALE PLUG
13	4	JACKING PADS
12	4	TRANSFORMER LIFTING LUGS
11	1	RATING & DIAGRAM PLATE (SS)
10	1	OFF-CIRCUIT TAP SWITCH (6-Position & Padlockable)
9	2	THERMOMETER POCKET (3/4" BSP MALE THREAD)
8	1	OIL FILLING PIPE WITH FLANGED COVER
7	1	TOP COVER with LIFTING LUGS (x2)
6	1	OIL LEVEL GAUGE (with 15°) COLD OIL LEVEL MARK
5	1	SILICA GEL BREATHER TYPE R1
4	2	EARTHING TERMINAL (FLAT TYPE suitable for M12 Bolt)
3	1	TRANSFORMER BASE (SKID TYPE) c/w HAULAGE HOLES & BRACING
2	1	LV CABINET, BOTTOM ENTRY, GENERIC MODEL - SUBJECT TO CHANGE (FACING-'F', BS:2562)
1	1	HV RMU - 11kV, 200A, GCB, 630A BUS [Schneider RN2d-T1/21] TLF PROTECTION, (FACING-'E' BS:2562)

IF IN DOUBT - ASK. REMOVE ALL SHARP EDGES. DO NOT SCALE. DRAWING NOT TO SCALE

REV	REV BY	VERIFIED	APPROVED	DESCRIPTION

REVISION DESCRIPTION	REV	PROJECT
ORIGINAL	00	CUSTOMER
		S.O. NUMBER
		P.O. NUMBER
		W.O. NUMBER

DRAWING TITLE	DRAWN BY:
GENERAL ARRANGEMENT DRAWING FOR 2000kVA WILSON e4 AMORPHOUS ULTIMATE LOW LOSS 11000/415V, 50Hz, Dyn11, ONAN AL WOUND DISTRIBUTION TRANSFORMER RN2d RMU & LV CABINET	J. NOVO
	DATE:
	01/07/2024
	DRAWING NO.:
	WPS-E4-2000-AL-A003

**Wilson Power Solutions Ltd.**  
 Westland Square, Leeds  
 West Yorkshire LS11 5SS, United Kingdom  
 Tel: +44 (0) 113 271 7588  
 Fax: +44 (0) 113 277 5124  
 web: www.wilsonpowersolutions.co.uk email: info@wilsonpowersolutions.co.uk  
**WPS-E4-2000-AL-A003** SHEET 1 OF 1