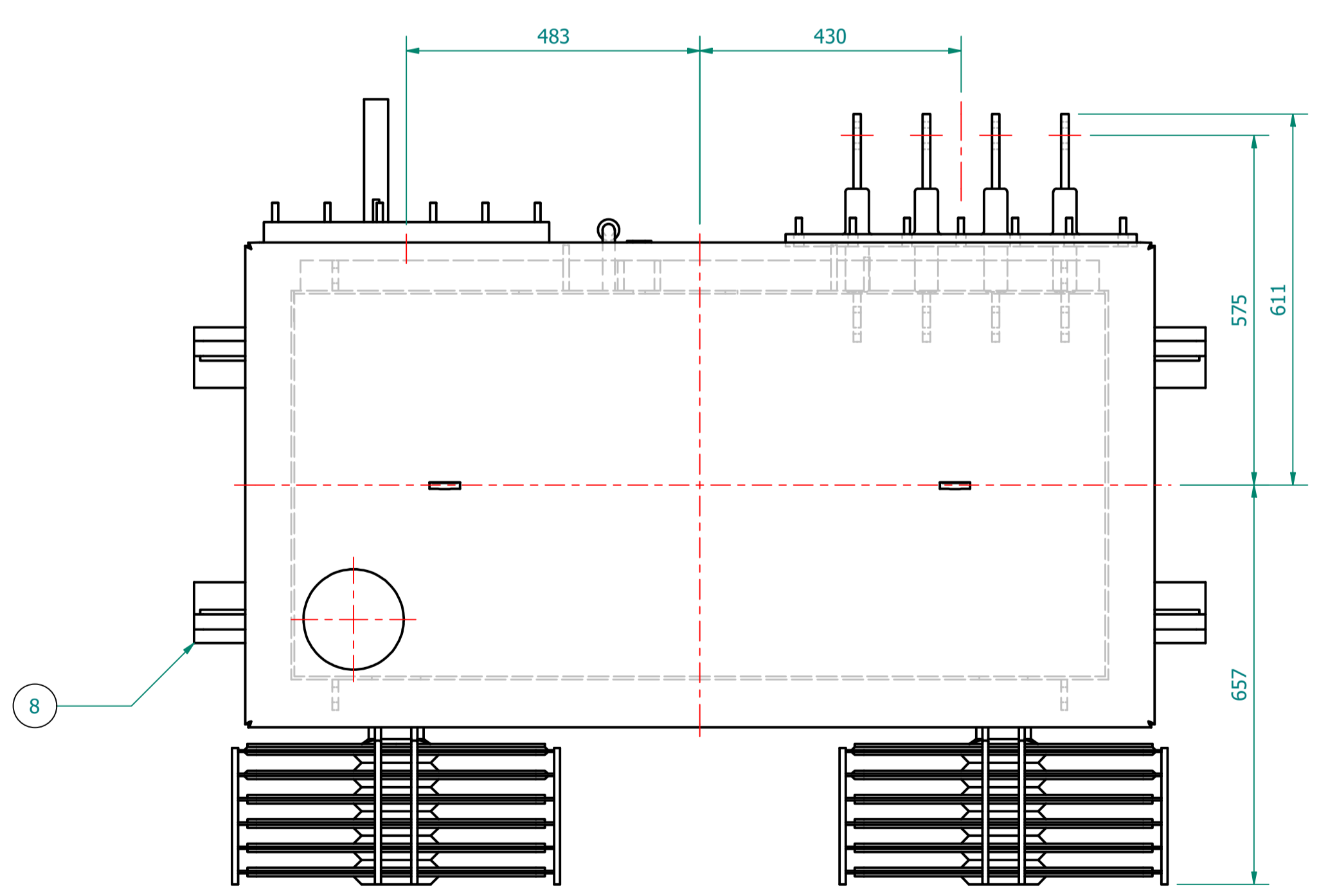
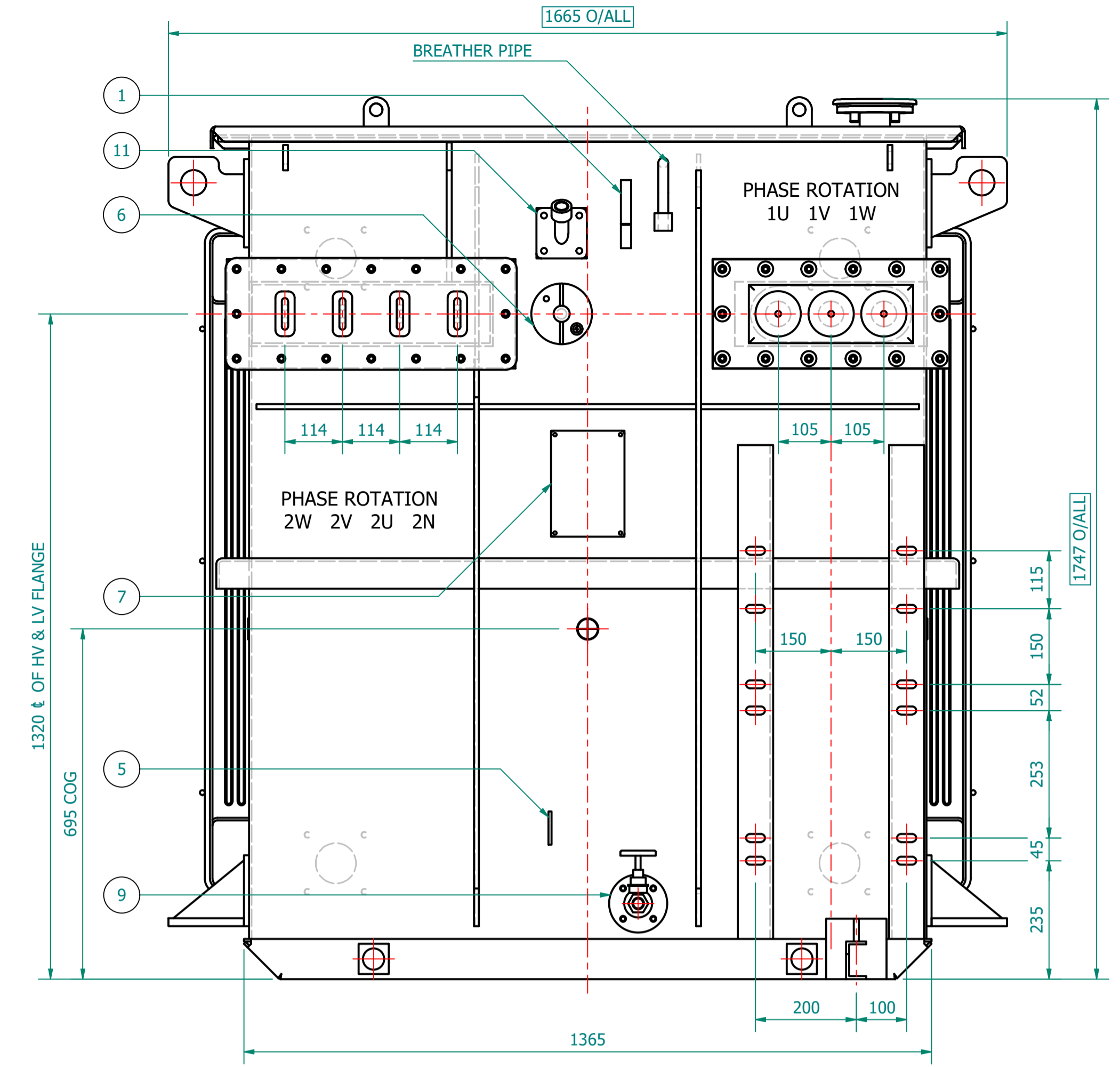
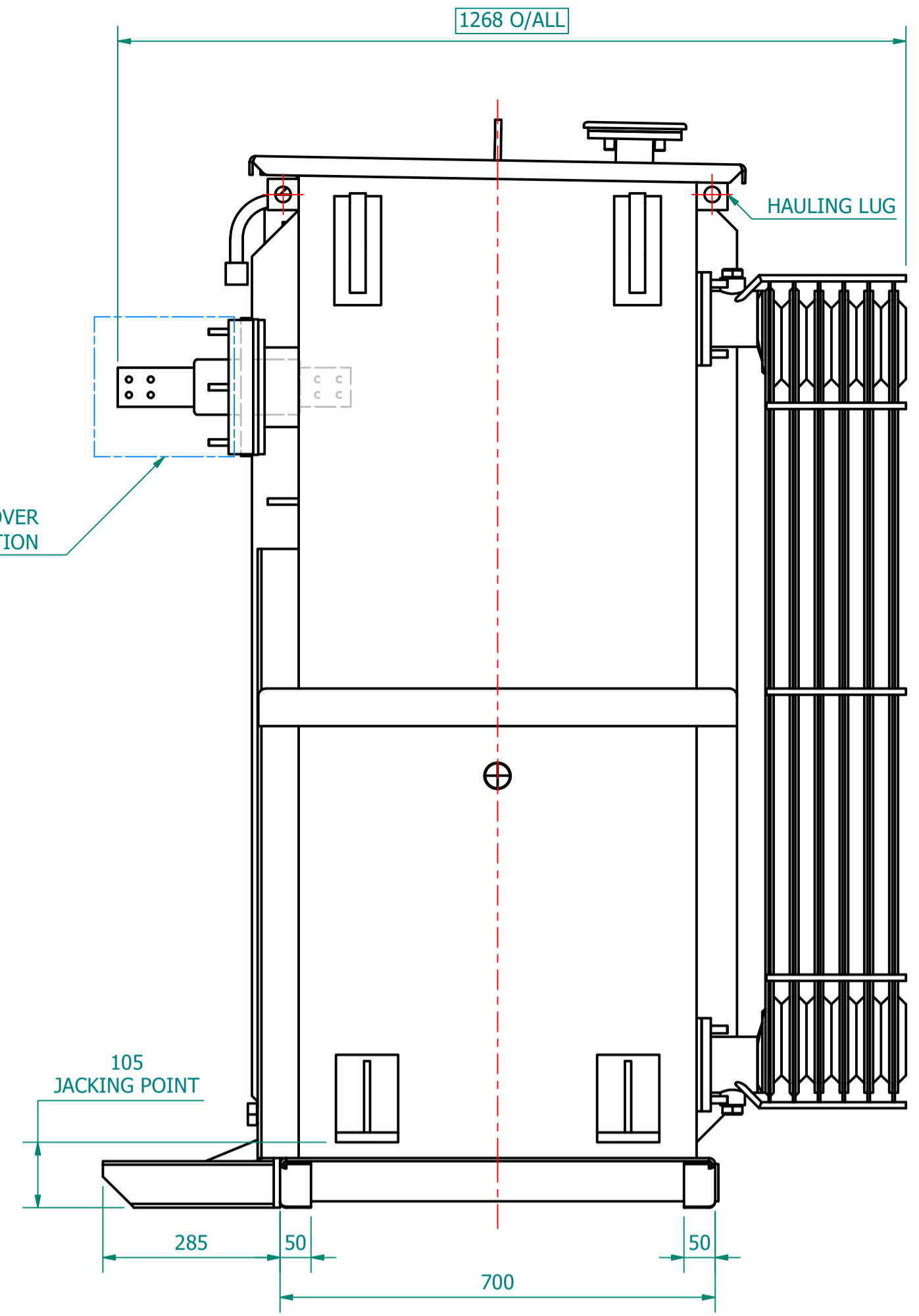


PLAN VIEW

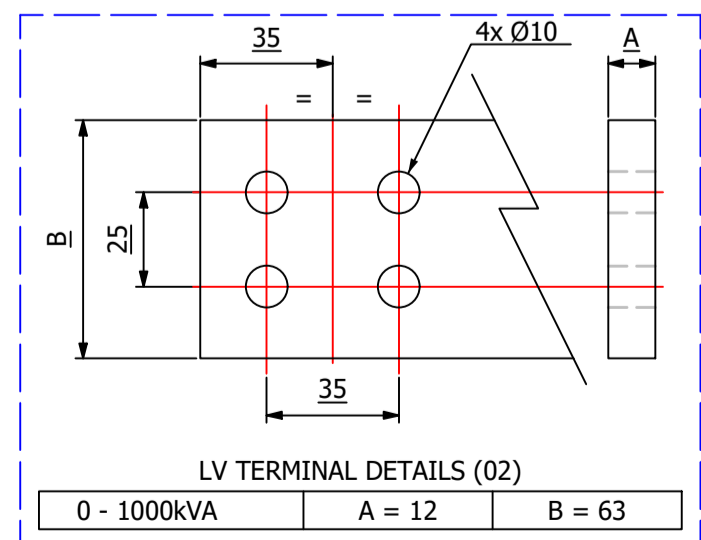
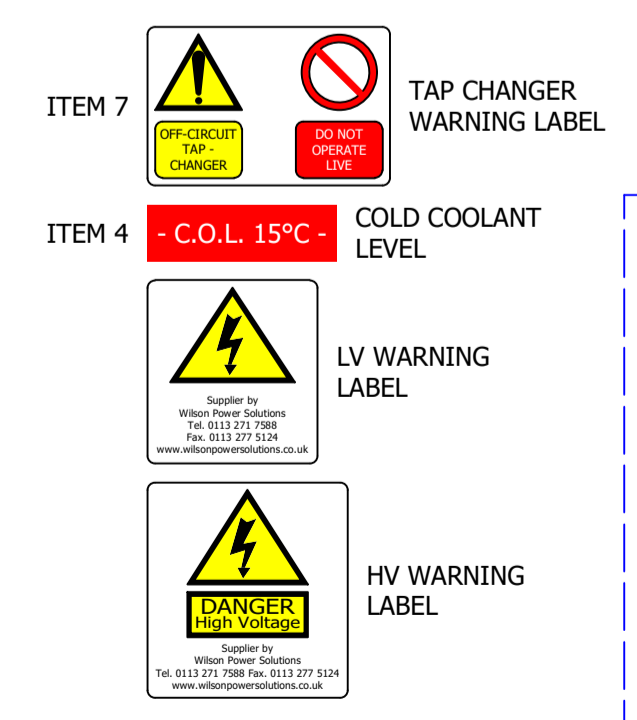


| TRANSFORMER WEIGHT & VOLUME | | |
|-----------------------------|----|------|
| CORE AND WINDING | kg | 1790 |
| TANK AND FITTING | kg | 1160 |
| COOLING LIQUID VOLUME | L | 854 |
| COOLING LIQUID WEIGHT | kg | 700 |
| TOTAL TX WEIGHT | kg | 3650 |

| 1000kVA ELECTRICAL RATINGS | | | | | |
|-------------------------------------|---|---|-------------------------------|---------------------------------|-----------------|
| No Load Voltage Ratio at Normal Tap | HV Tappings | Vector Group | Frequency | Full-Load Current at Normal Tap | |
| | | | | HV Side | LV Side |
| 11000 / 433V | +5 to -5.0% in 2.5% INCREMENTS | Dyn11 | 50Hz | 52.49A | 1333.37A |
| Design Impedance at Normal Tap | No Load Losses at rated Voltage & Frequency | Full Load Losses at rated Current & at 75°C Temp. | Temp. Rise above Ambient 40°C | | |
| | | | in Oil by Therm. | | in Wdg. by Res. |
| 4.75% | 693W | 7600W | 60°C | 65°C | |

| ITEM | QTY | DESCRIPTION |
|------|-----|--|
| 12 | 2 | DETACHABLE RADIATORS with AIR-RELEASE & DRAIN PLUG (520W x 1200C x 65 x 40P) |
| 11 | 1 | THERMOMETER POCKET (3/4" BSP MALE THREAD) |
| 10 | 4 | TRANSFORMER LIFTING LUGS |
| 9 | 1 | DRAIN VALVE (25NB) with MALE PLUG |
| 8 | 4 | JACKING PADS |
| 7 | 1 | RATING & DIAGRAM PLATE (SS) |
| 6 | 1 | DE-ENERGIZE TAP CHANGER (5-Position & Padlockable) |
| 5 | 1 | EARTHING TERMINAL (FLAT TYPE suitable for M12 Bolt) |
| 4 | 1 | TOP COVER with LIFTING LUGS (x2) |
| 3 | 1 | TRANSFORMER BASE (SKID TYPE) c/w HAULAGE HOLES |
| 2 | 1 | OIL FILLING PIPE WITH FLANGED COVER |
| 1 | 1 | OIL LEVEL GAUGE (with 15°) COLD OIL LEVEL MARK |

ESSENTIAL LABELS



GENERAL NOTES
 1 ALL DIMENSIONS ARE IN 'mm'.
 2 ALL DIMENSIONS/WEIGHTS ARE SUBJECT TO ± 10% TOLERANCE.
 3 ELECTRONIC SCALE - 1:1 (ONLY WRITTEN DIMENSIONS TO BE FOLLOWED).
 4 TOLERANCE ON IMPEDANCE PER IEC:60076.
 5 PAINT SHADE.: RAL7033 TO ISO12944 - MIN C4 SPEC.

IF IN DOUBT - ASK. REMOVE ALL SHARP EDGES. DO NOT SCALE. DRAWING NOT TO SCALE

MANUFACTURED BY: **TOSHIBA TRANSFORMER**
 TOSHIBA TRANSMISSION & DISTRIBUTION SYSTEMS (INDIA) PVT. LTD.

| REV | REV BY | VERIFIED | APPROVED | DESCRIPTION |
|-----|--------|----------|----------|-------------|
| | | | | |

| REVISION DESCRIPTION | REV | PROJECT |
|----------------------|-----|---------|
| ORIGINAL | 00 | |

| REV. BY: | DATE | CUSTOMER |
|-------------|-------------|----------|
| M. STOTSJUK | 13-SEP-2021 | |

| PROJECT | DRAWING TITLE |
|---------|---|
| | GENERAL ARRANGEMENT DRAWING FOR T2, 1000kVA |

| SUPPLIED BY: | WILSON POWER SOLUTIONS |
|--------------|--|
| | Westland Square, Leeds, West Yorkshire LS11 5SS, United Kingdom Tel: +44 (0) 113 271 7588 Fax: +44 (0) 113 277 5124 web: www.wilsonpowersolutions.co.uk email: info@wilsonpowersolutions.co.uk |

BASED ON: