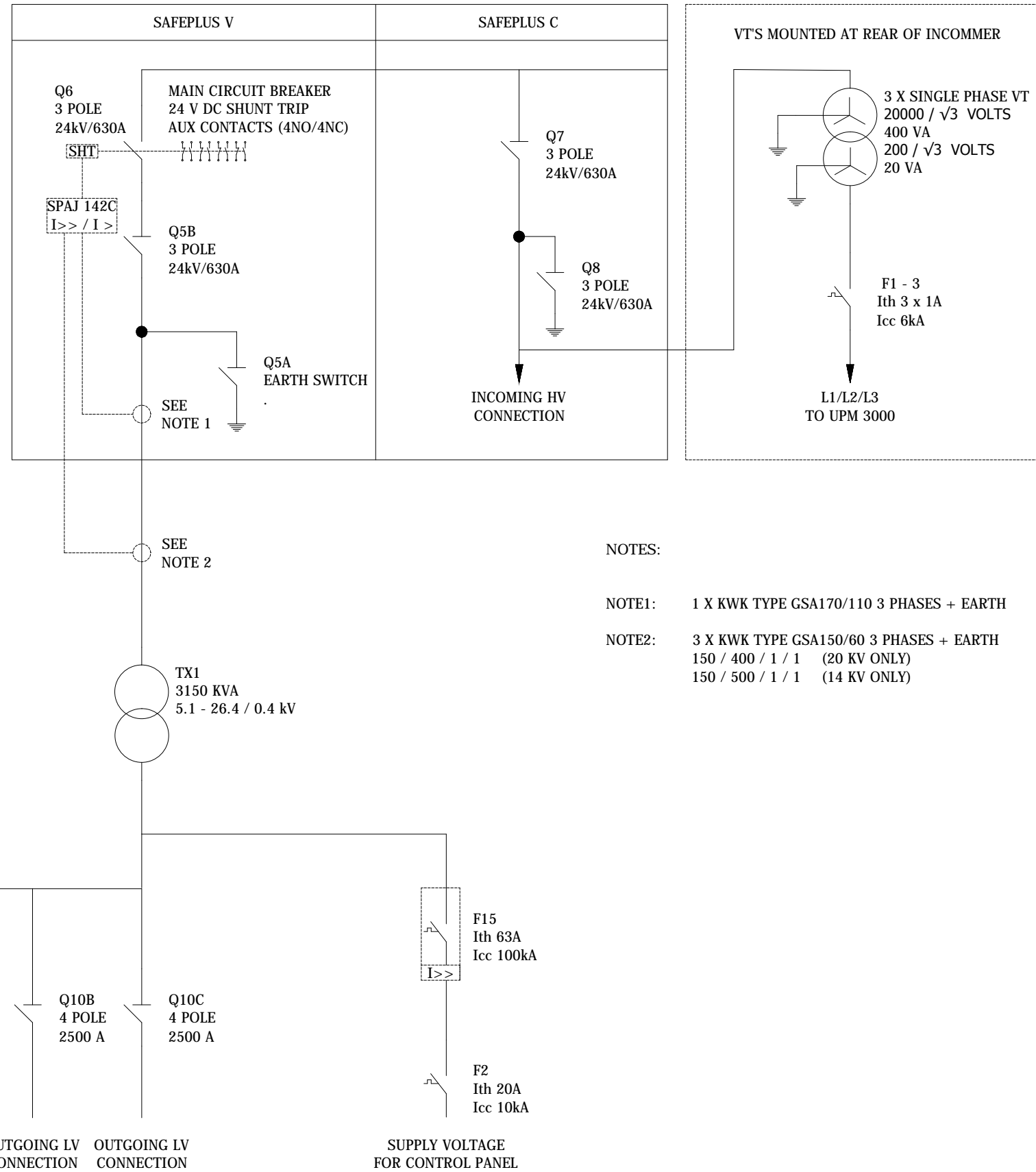


W/O No :.



NOTES:

NOTE1: 1 X KWK TYPE GSA170/110 3 PHASES + EARTH

NOTE2: 3 X KWK TYPE GSA150/60 3 PHASES + EARTH
 150 / 400 / 1 / 1 (20 KV ONLY)
 150 / 500 / 1 / 1 (14 KV ONLY)

SHEET 1 OF 1

REV	REV BY	VERIFIED	APPROVED	DESCRIPTION

REVISION DESCRIPTION	REV:	PROJECT TITLE
ORIGINAL	00	

DATE:	CUSTOMER
23-NOV-18	
26-NOV-18	
26-NOV-18	

DRAWING TITLE
SINGLE LINE DRAWING FOR 3150 KVA CONTAINERISED SUBSTATION CONTAINER H210, H211, H212

WILSON POWER SOLUTIONS

Wilson Power Solutions Ltd.
 Westland Square, Leeds,
 West Yorkshire LS11 5SS, United Kingdom
 Tel: +44 (0) 113 271 7588
 Fax: +44 (0) 113 277 5124
 web: www.wilsonpowersolutions.co.uk email: info@wilsonpowersolutions.co.uk

DRAWN BY: S CLARKE	DATE DRAWN: 23-NOV-18	DWG. No. WPS-HIRE-SC-001
--------------------	-----------------------	--------------------------